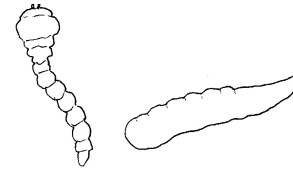
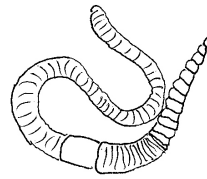
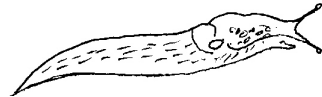
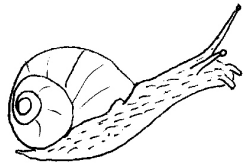


Rotting Log Critter Guide: Count the Legs!



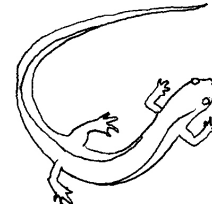
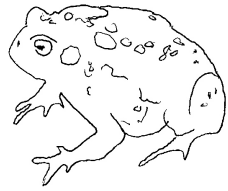
No Legs:

Snail

Slug

Worm

Some Insect Larvae

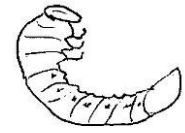
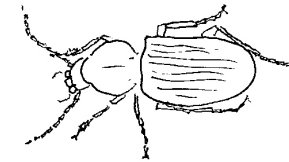
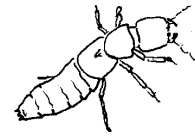
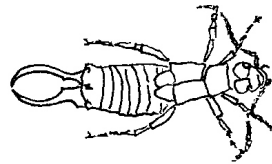


Four Legs:

Toad

Red Eft

Salamander



Six Legs:

Springtail

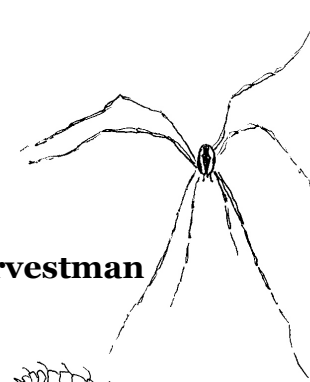
Ant

Earwig

Rove Beetle

Ground Beetle

Some Insect Larvae

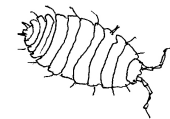
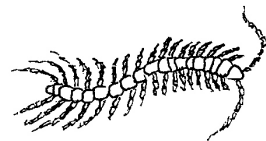


Eight Legs:

Mite

Spider

Harvestman



Many Legs:

Centipede

Millipede

Sowbug