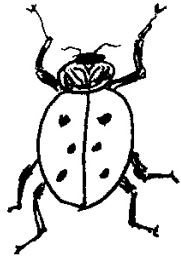


INSECT ORDERS IDENTIFICATION GUIDE

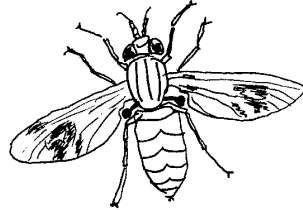
Coleoptera
"sheath wings"
Lady beetle



BETLES

Hard front wings meet in a straight line; hind wings like clear membranes; front wings cover (sheath) the hind wings

Diptera
"Two wings"
Deer Fly



FLIES

Only one pair of wings; stubby knobs in place of back wings, very short antennae

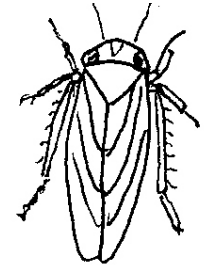
Heteroptera
"different wings"
Small Milkweed Bug



TRUE BUGS

Front wings half leathery, half clear, form 'x' shape on back when folded; jointed beak for sucking fluids

Homoptera
"similar wings"
Aster Leafhopper



PLANT HOPPERS

Two pairs of similar wings held roof-like over the body; jointed beak for sucking fluids

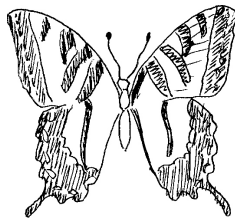
Hymenoptera
"membranous wings"
Bumblebee



ANTS, WASPS, BEES, HORNETS

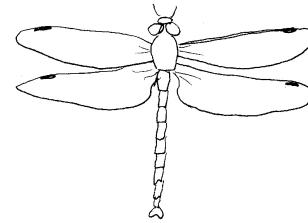
Wings like clear membranes; hind wings smaller than front wings; stingers in some

Lepidoptera
"scaly wings"
Tiger Swallowtail



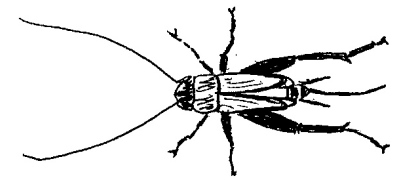
BUTTERFLIES & MOTHS
Wings covered with powdery scales; antennae feathery or with knobs at the ends; sucking mouthparts.

Odonata
"having teeth"
Green Darner



DRAGONFLIES & DAMSELFLIES
Two pairs of long wings; long slender bodies; short antennae; hairs on legs to catch food

Orthoptera
"straight wings"
Field Cricket



CRICKETS & GRASSHOPPERS
Front wings straight and leathery; hind wings folded like a fan; chewing mouthparts

